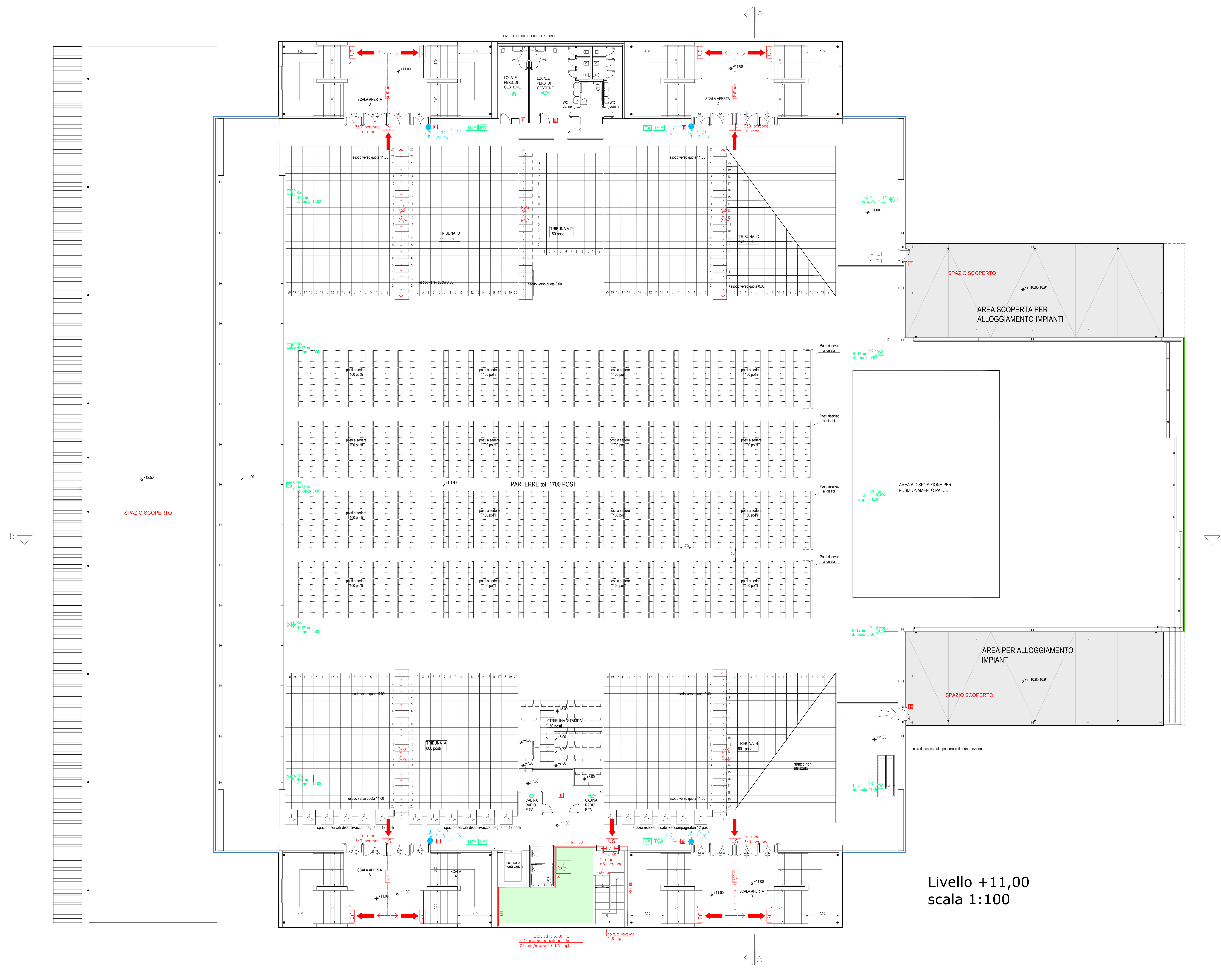


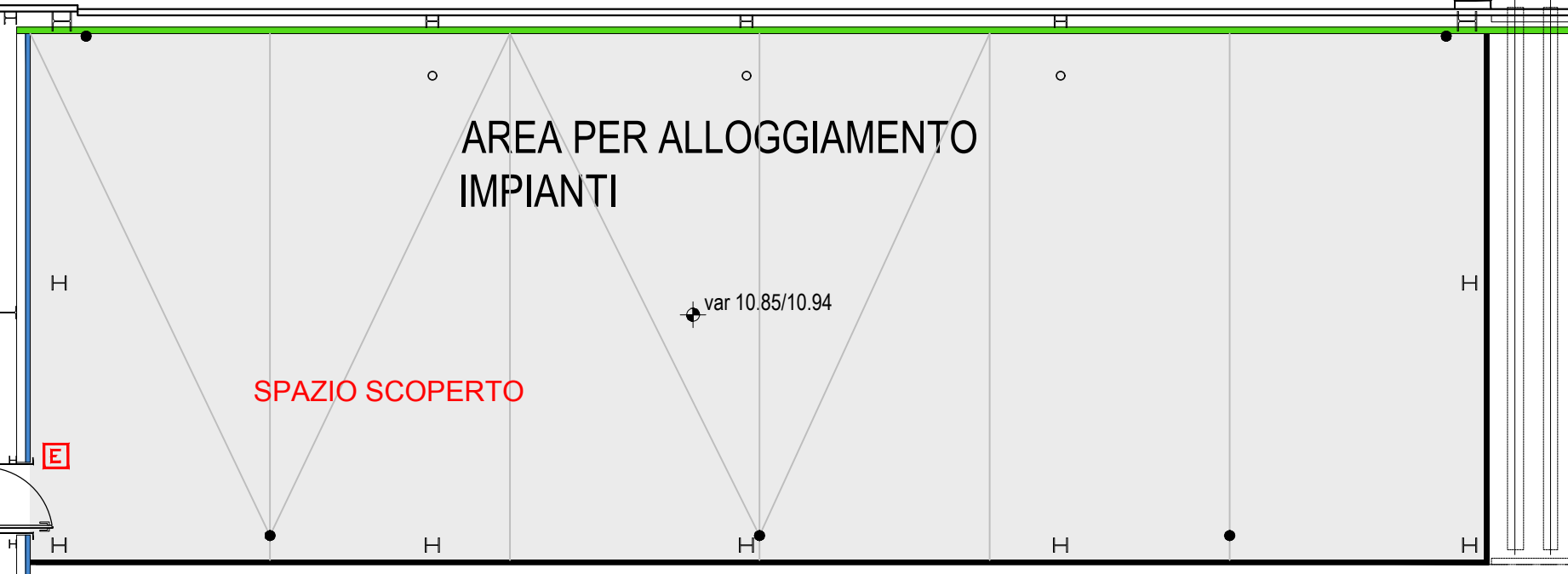
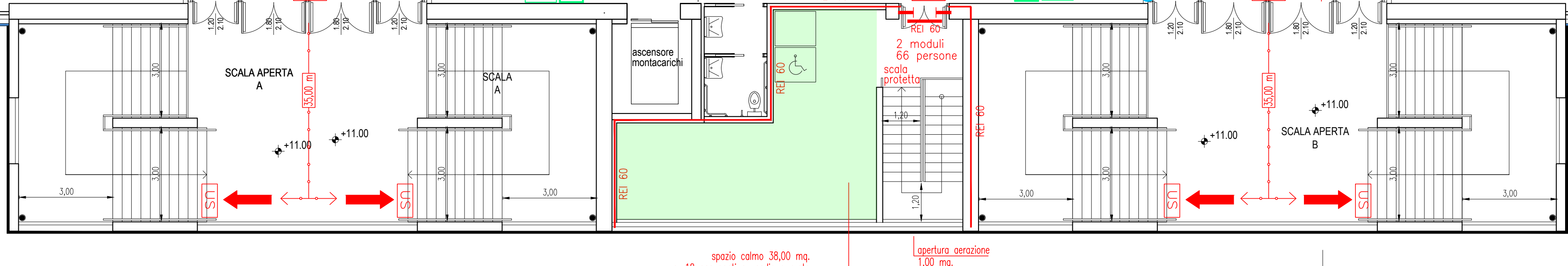
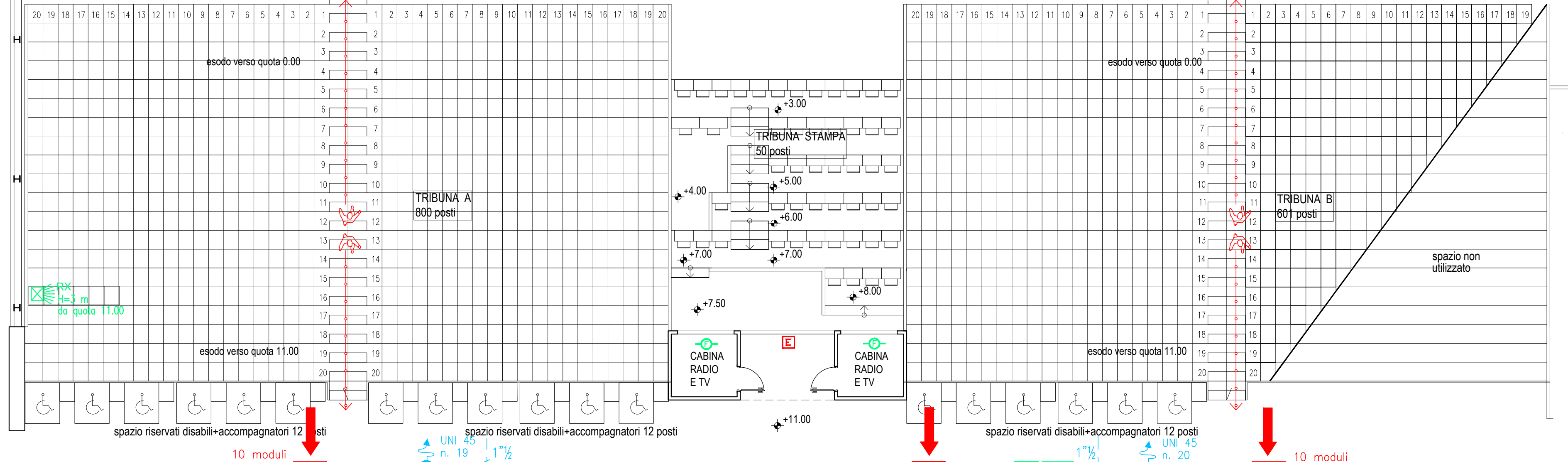
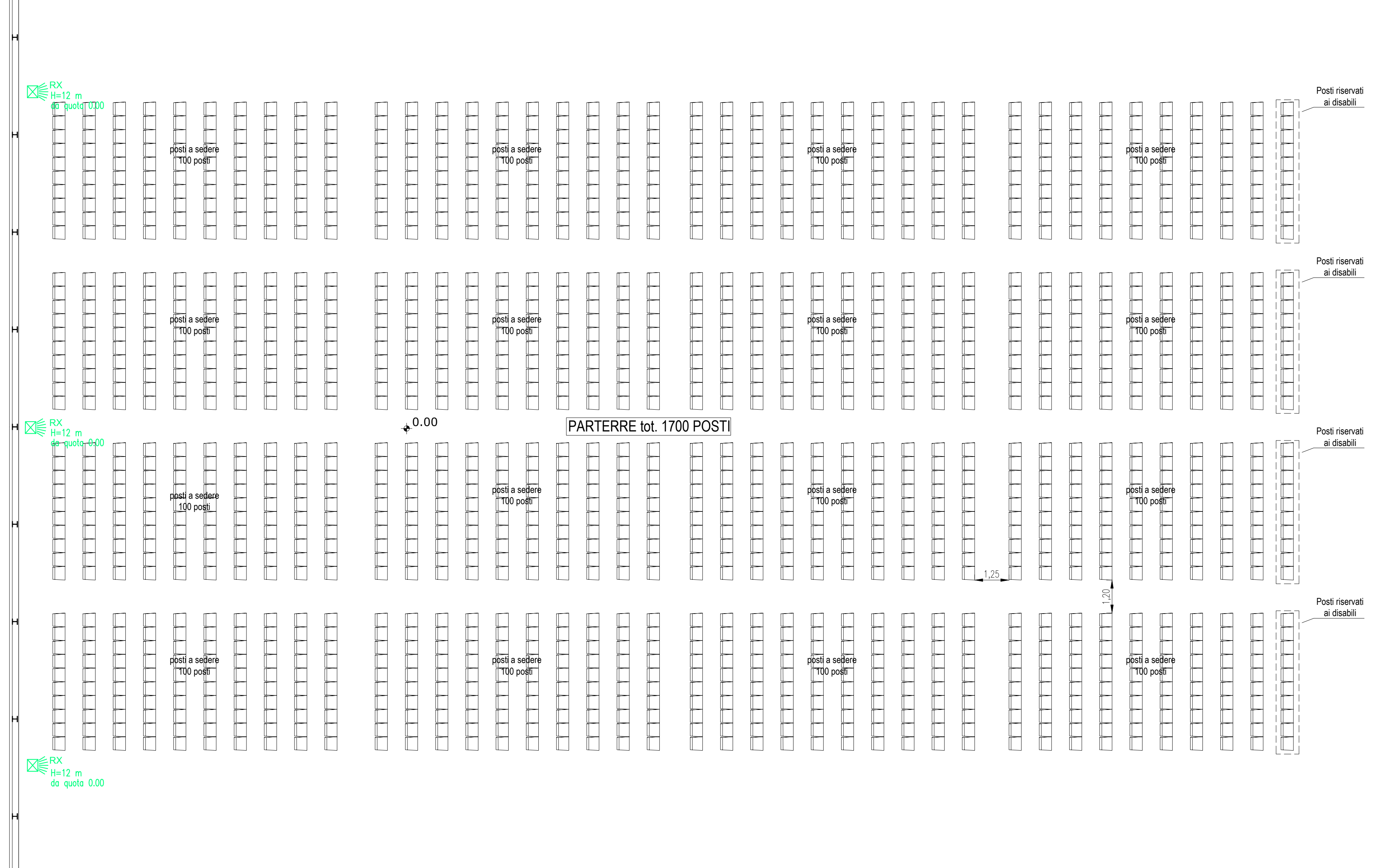
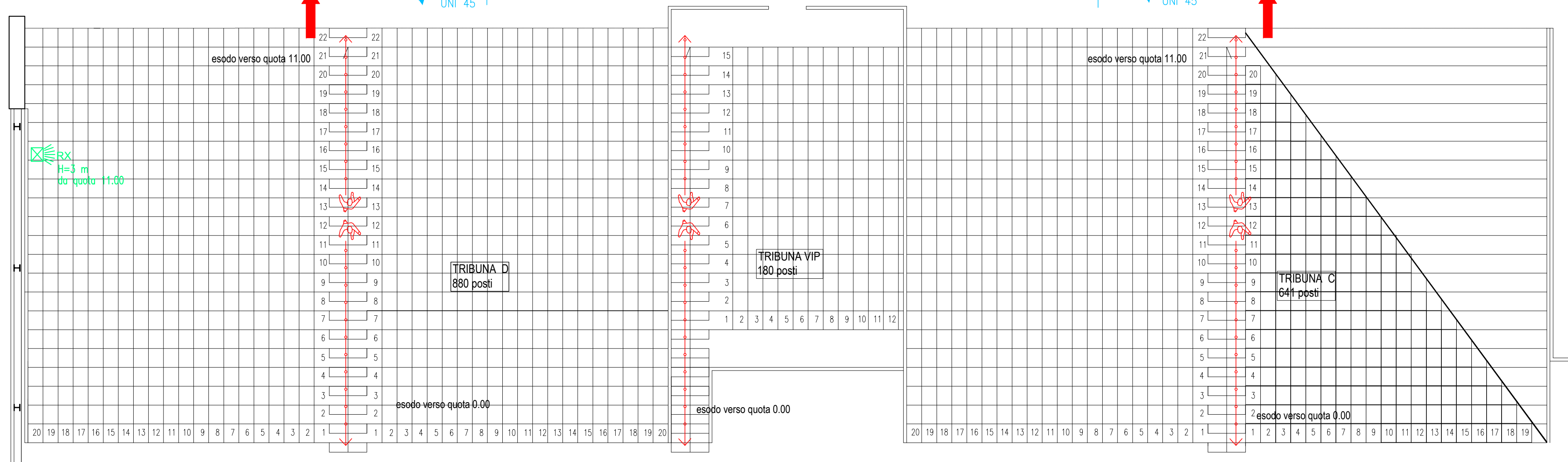
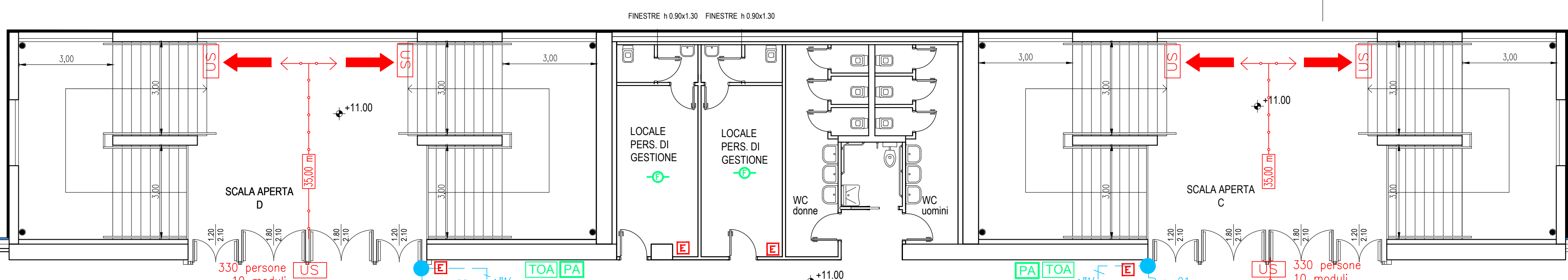
Livello +7,50  
 scala 1:100

spazio calmo 3,95 mq  
 n. 2 occupati su sedia a rotelle  
 1,975 mq/occupante (>1,77 mq)





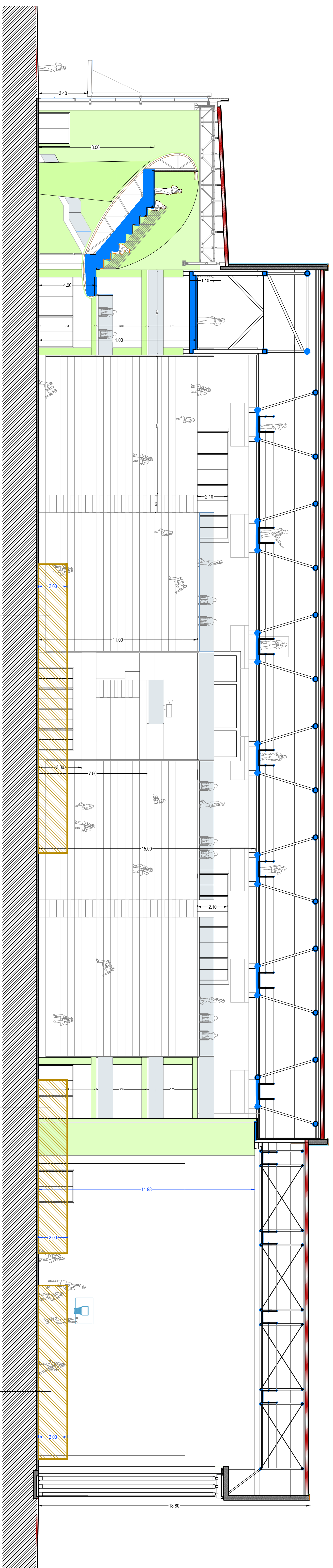
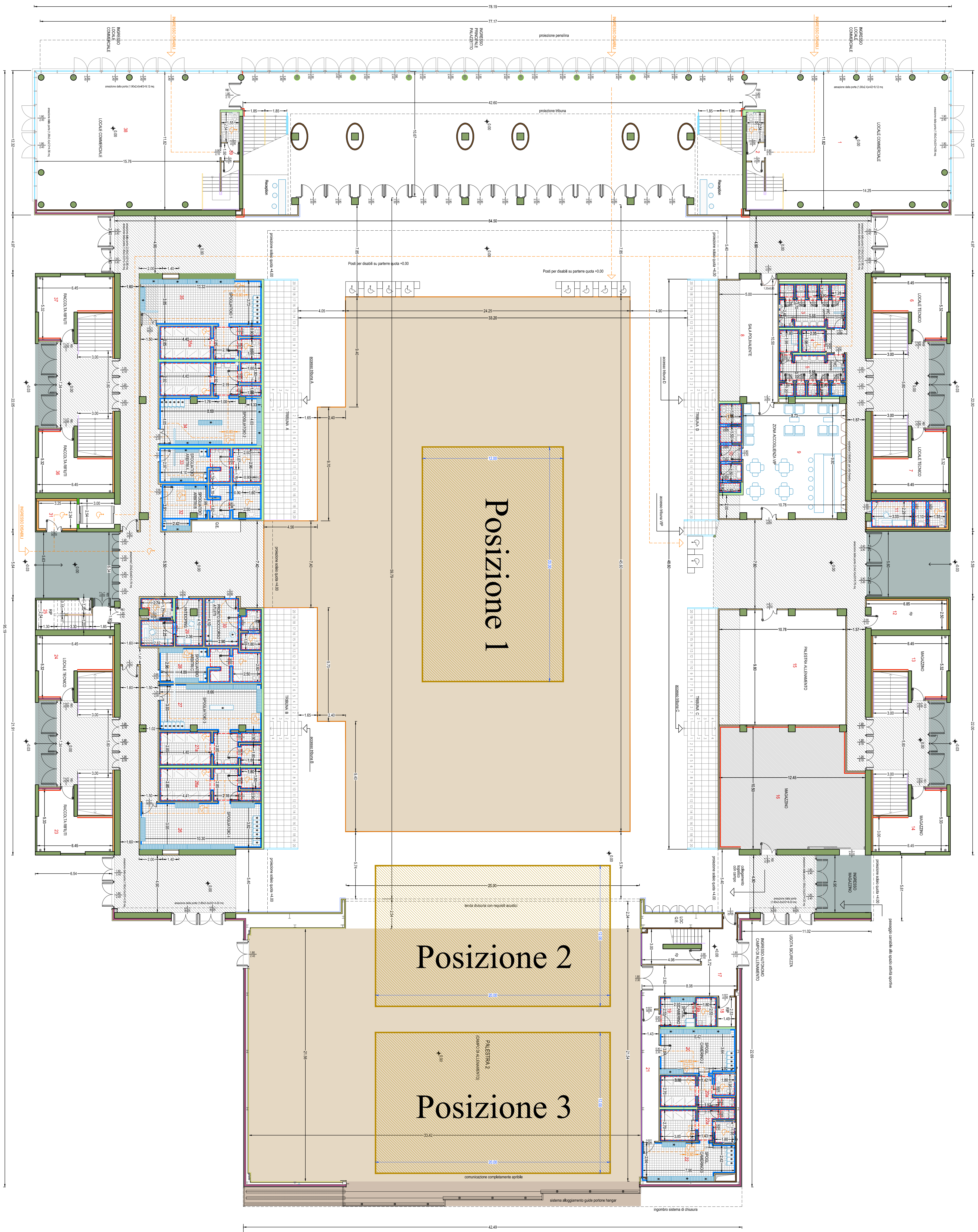
Livello +11,00  
scala 1:100



spazio cabina 30,00 mq  
n. 18 occupanti su sede a quota  
2,10 mq/occupante (2-1,77 mq)

Loggia servizio  
1,00 mq





Posizione 1

Posizione 2

Posizione 3